

Pre-Inspection Checklist	
Project: Taylor Wimpey North Finchley site	Date: 18 December 2024
Area: Block and beam floor	Am / Pm: AM
Locaton: Block D	Drawing Number: 2407001 - Block D rev C
Weather Condition: Dry / cold	Sheet Number: 22227-BM-D-L1-DR-A-151 C5

Table of Contents

- Setting Out Line & Level to Current Drawings
- Product Material Compliant to Engineer Architects Specification
- Rebar / Mesh if to Specified Drawing
- Correct Depth of Concrete Achieved
- Concrete Specification for Tolerance Achieved
- Additonal Measures Taken

Completed By: LP

Date Completed: 18 December 2024



Completed By: LP

Date Completed: 18 December 2024



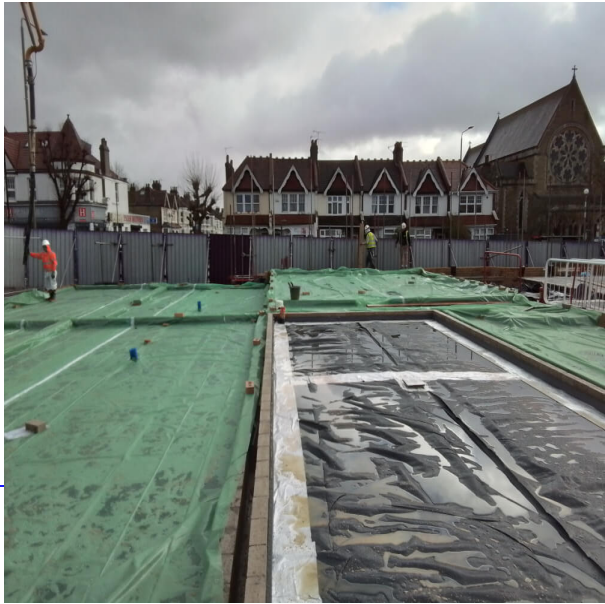
Completed By: LP

Date Completed: 18 December 2024

(a) material POLYPIPE

Completed By: LP

Date Completed: 18 December 2024



Completed By: LP

Date Completed: 18 December 2024



Additional Measures Taken

Completed By: LP
Date Completed: 18 December 2024

Proceed/not proceed

Reason for Rejection/Comments: na

Signed for HOULIHAN: Logesparan Priyaparan

Date: 2025-01-15

Signed for client by: Harvey scott

Date: 2025-03-28

The above inspections have been carried out and are acceptable/unacceptable

Non Conformities/Comments

Reason for non Conformities/Comments: na

Signed for HOULIHAN: Logesparan Priyaparan

Date: 2025-03-04

Signed for client by: Harvey scott

Date: 2025-03-28